

Effective October 1, 2016

Spare Parts for AFP 810 Dental Film Processors and Accessories

THIS PARTS LIST SUPERSEDES ALL PRIOR SPARE PARTS LISTS.

Part No. 860-000001

TABLE OF CONTENTS

PARTS LISTINGS

Page Number

Parts Notes	1
Ordering Information	2
Warranty and Returns Information	3
Main Frame Assembly	4
Solution Heater Pads and Trays, etc	6
Developer and Fixer Transport Components	7
Washer/Dryer Components	9
Individual Replacement Parts - Transports and Washer/Dryer	11
Processor Maintenance Items	11
Electronic Control Boxes and Associated Parts	12
Temperature and Film Sensor Assemblies	13
Heater Fan Assembly	13
Hose Solenoid Assembly	14
Chemical Replenishment Systems	14
Processor Sump Base and Covers	15
Daylight Loader and Accessories	15
Leveling Base	16
Accessories	16

ILLUSTRATIONS

Main Case Illustration	17
Main Frame	18
Transport Assembly	19
Washer/Dryer Assembly	20
Heater Fan Assembly	21
Wash Solenoid Assembly	22

PARTS NOTES

1. All shipments F.O.B. Mount Kisco, NY 10549 at AFP Manufacturing's sole discretion. AFP will select method of standard surface shipment unless otherwise specified. Freight will be prepaid and charges added when determined.
2. Prices subject to change without notice. Freight Company's delivery schedules are not guaranteed by AFP Manufacturing.
3. Minimum billing: \$50.00 net per order.
4. Some spare parts for equipment over 5 years old may be out of stock and/or require factory substitution or delay for production. AFP Manufacturing will advise status upon receipt of order.
5. If a part number is not listed, please contact us for further assistance. Model and Serial Number of the processor or equipment will expedite your spare part identification.
6. AFP Manufacturing's Warranty, Repair and Return Policy as amended, applies.
7. Specifications are subject to change without notice.
8. When placing orders, please have your Customer Account Number, Purchase Order Number, and product serial number available.
9. This Spare Parts List supercedes all prior Spare Parts Lists as per effective date.

ORDERING INFORMATION

1. When ordering parts offline, please provide the following:
 - a. AFP Part Number
 - b. Description of Part
 - c. Quantity (some items are packaged and sold only in multiple quantities)
 - d. Model and Serial Number of equipment (when applicable)
 - e. Your Customer Account Number
 - f. Priority of Shipment
 - g. Requested name of Freight Company (if applicable)
 - h. Your Purchase Order Number
 - i. Your Name, Phone Number, and email address
2. Prices FOB warehouse in Mount Kisco, NY and subject to change. Price column notation of **.001, or .002 are not actual prices** but are defined on the Parts/Price List Notes page.
3. Prices for Part Numbers not listed in this catalog will be quoted upon request.
4. The minimum billing for parts orders is \$50.00 net. Additional shipping charges are added to the invoice.
5. Normal terms of sale are net 30 days for credit approved dealers.
6. The consignee must immediately report all damage due to shipping to the carrier. All original packaging must be retained for carrier evaluation. Claims for damage or loss of shipment must be filed by consignee with the carrier, with the exception of U.S. Mail.
7. All claims for shortages, errors or defective material must be made in writing to AFP Manufacturing within 10 days of receipt of goods.
8. Warranty: AFP Manufacturing agrees to replace (at the manufacturer's option) any part or accessory AFP finds to be defective in material and/or workmanship when returned by an authorized local dealer. AFP will not be responsible for any consequential or incidental damages resulting from the sale of these items, even if loss or damage is caused by negligence or fault other than of AFP Manufacturing.

LIMITED WARRANTY

All parts (except lamps and supply items) purchased from AFP Manufacturing are warranted to function properly for 90 days from AFP Manufacturing's billing date. AFP makes no other warranties, expressed or implied, of merchantability for these parts.

If these parts do not function properly within the warranty period, AFP Manufacturing will replace them without charge. This remedy is not available if the items are damaged by misuse, lack of maintenance or other circumstances beyond AFP's control.

WARRANTY REPLACEMENT PROCEDURE

- IMPORTANT NOTE -

To facilitate the return of warranty parts, a Return Material Authorization (RMA) must accompany any parts returned to AFP. Also, a RMA# must be clearly visible and affixed to the box containing the returned parts. To obtain an RMA, contact the Customer Service Department. **All parts must be returned freight prepaid within 15 days of receipt of replacement parts. Please refer to the following procedure.**

In order to expedite warranty replacement and proper invoice credit upon defective parts return, the following procedure must be followed:

1. Your Service Department should determine the specific cause for the equipment malfunction and identify the defective part number and description.
2. Contact the Customer Service Department to order replacements parts. Account Number, Customer Information, Machine Serial Number and Installation Date along with Part Number, Quantity and Description are required at the time of placing your replacement order.
3. Customer Service will then send the warranty item, at no charge, with the RMA form and **RMA number clearly noted on the pack-slip and invoice**. Ground freight charges will be paid by AFP Manufacturing. Warranty does not cover air freight.
4. An appropriate explanation of the defect, component failure, condition or reason for parts return **MUST** appear on the return ticket. **AFP RESERVES THE RIGHT TO INSTITUTE A 20% SERVICE CHARGE FOR MERCHANDISE THAT IS RETURNED WITHOUT A PROPER DETAILED EXPLANATION OF WHY THE MERCHANDISE IS BEING RETURNED.**
5. Prepare and attach a **PARTS RETURN TICKET** to each part referencing the same RMA number issued by AFP
6. Clearly mark the box containing returned parts with your RMA number. Parts returned to AFP without PROPER authorization and without PROPER documentation will be refused or returned to the Dealer at the Dealer's expense.
7. Upon receipt, using the RMA form for verification, AFP will close the RMA.
8. If the warranty items are not returned within 15 days, a notification is sent via confirmed fax transmission or e-mail. If the items are then not returned within 5 business days of that letter, the item will be billed and no subsequent returns or credits will be issued.

Parts returned for warranty consideration should be sent to AFP Manufacturing, 185 Kisco Avenue, Suite 202, Mount Kisco, NY 10549, with the RMA # CLEARLY VISIBLE ON OUTSIDE OF CARTON, in accordance with the AFP Manufacturing Warranty Replacement Procedure.

No credit can be issued without all the information required.

MAIN FRAME ASSEMBLY

(See “Main Frame Assembly - Chain Drive” Diagram)

<u>Part #</u>	<u>Quantity</u>	<u>Description</u>	<u>Drawing Item #</u>
865-006007		Complete Main Frame Assembly - w/Motor For use with internal black control box models. Includes complete Main Frame Assembly with motor. Does not include solution heating pad or trays.	
865-004207		Main Frame Assembly — No Motor For use with all domestic models, includes complete Main Frame Assembly. Does not include motor, solution heating pad or trays.	
865-004307		Main Frame Assembly — No Motor For Use with all International models, includes complete Main Frame Assembly and ground plate. Does not include motor, solution heating pad or trays.	
865-010307		Drive Motor Assembly w/Von Weise Motor	32
	1	Drive Motor, Von Weise	
	1	10-32 Phillips Panhead Screw, 1 1/4” lg	
	3	10-32 Phillips Panhead Screw, 1 1/2” lg	
	1	Sprocket 1/4” I.D.	26
	1	10-32 Allen Set Screw	
	2	Idler Roller	
865-050007		Drive Motor Sprocket Assembly	26
	1	Drive Motor Sprocket 1/4” I.D.	
	1	10-32 Allen Set Screw 3/16” Length	
865-081007		Ground Wire Assembly (Short)	3
	1	Ground Wire	
	2	6-32 Hex Nut	
	2	6-32 Phillips Flathead Screw	
865-083007		Ground Wire Assembly (Long)	22
	1	Ground Wire	
	1	8-32 Phillips Panhead Screw	
	1	10-32 Phillips Panhead Screw	
865-082007		Ground Angle Clip Assembly	6
	1	Ground Angle Clip	
	1	6-32 Hex Nut	
	1	6-32 Phillips Flathead Screw	
873-090007		Kit — Tie Rod Frame	7
	1	Tie Rod	
	1	Washer	
	2	3-48 Hex Nut	

Unless otherwise indicated, parts fit all current AFP 810 Models - Basic, Plus and Plus AR

MAIN FRAME ASSEMBLY

(See "Main Frame Assembly - Chain Drive" Diagram)

<u>Part #</u>	<u>Quantity</u>	<u>Description</u>	<u>Drawing Item #</u>
865-091007		End Plate Assembly	9
	1	End Plate	
	4	#6 Phillips Panhead Sheet Metal Screws	
865-040007		Stainless Steel Sprocket Assembly for Transport Drive	13
	1	Sprocket/Shaft Assembly	
	1	Short Plastic Black Bushing	
	1	Long Plastic Black Bushing	
881-010007		Idler Bushing Assembly	20
	1	Idler Bushing	
	1	Steel Standoff	
	1	8-32 Panhead Phillips Screw	
	1	8-32 Phillips Flathead Screw	
865-030007		Stainless Steel Sprocket Assembly for Washer/Dryer Module	24
	1	Shaft Assembly w/Sprocket, Bushing and Sleeve	
	1	Short Plastic Bushing	
865-041007		Steel Spreader Assembly	34
	1	Steel Spreader	
	2	8-32 Phillips Panhead Screws	
865-042007		Plastic Spreader Assembly	35
	1	Plastic Spreader	
	2	1/4"-20" x 3/4" Phillips Panhead Screws	
881-041007	1	Right Side Panel - Main Frame	5
881-040007	1	Left Side Panel - Main Frame	29
865-080007	1	Bottom Plate - Main Frame	8
865-020007	1	Plated Main Drive Chain	23
881-000007		Chain Cover Assembly for Left Side	25
	1	Cover, Main Frame	
	1	6-32 x 1 5/8 Phillips Flathead Screw	
	1	6-32 Flexnut	
	2	8-32 x 1/2 Panhead Phillips Screws	
	3	#6 x 5/8 Phillips Panhead Self Tap Screws	
881-020007	1	Short Plastic Bushing	14
		For main frame assembly drive sprocket (chain cover side)	
881-030007	1	Long Plastic Bushing	12
		For main frame assembly drive sprocket (left side panel)	

MAIN FRAME ASSEMBLY

(See "Main Frame Assembly - Chain Drive" Diagram)

<u>Part #</u>	<u>Quantity</u>	<u>Description</u>	<u>Drawing Item #</u>
801-049971	1	Tension Clip	31
865-070007		Kit —Main Drive Chain Assembly	
	1	Plated Main Drive Chain	23
	2	Idler Rollers	20
	2	Steel Standoffs	
	2	8-32 x 5/8 Phillips Flathead Screws	
	1	1/4" I.D. Sprocket for Motor	26
	1	Sprocket Assembly for W/D	24
	2	Sprocket Assembly for Transport	13
	2	Long Plastic Bushings	12
	3	Short Plastic Bushings	14
	2	8-32 x 1/2" Phillips Panhead Screw	21
9992405019		Kit —Main Drive Chain Tension	

Heater Pad

(See "Main Case" Diagrams)

865-002007	1	Heating Pad (Blue) for Solution Tray
------------	---	---

Stainless Steel Solution Trays and Associated Parts

(See "Main Case" Diagrams)

871-003001-1	Cover Solution Tray - Developer (Red)
871-003001-2	Cover Solution Tray - Fixer (Blue)
871-011107	Solution Tray with overflow pipe
873-080007	Solution Drain Plug

Unless otherwise indicated, parts fit all current AFP 810 Models - Basic, Plus and Plus AR

DEVELOPER AND FIXER TRANSPORT MODULE

(See "Transport Assembly - Developer & Fixer - Chain Drive" Diagram)

<u>Part #</u>	<u>Quantity</u>	<u>Description</u>	<u>Drawing Item #</u>
866-001007	1	Complete Transport Module, Dev./Fix.	
866-011007		Chain Guide Assembly	
	4	#6 x 1/4" Phillips Sheet Metal Screws	1
	1	Stainless Steel Angle Chain Guide	2
874-070007		Plastic Hanger Assembly (TOP)	10
	1	Plastic Spreader	
	2	Plastic Hanger	
	2	1/4 -20 x 1 1/2 Allen Head Screw	9
874-081007		Plastic Spreader Assembly (BOTTOM)	
	1	Plastic Spreader	12
	2	1/4 -20 x 5/8 Phillips Panhead Screw	8
866-050007		3-Fin Paddle Agitator Assembly	
	1	3-Fin Paddle Agitator with pins	15
	1	3/16" I.D. Stainless Steel Washer	16
	1	3/16" Plastic Gear	7
866-020007		Stainless Steel Transport Drive Shaft Assembly	
	1	Shaft Assembly w/Ferrule, Sleeve and Setscrew	18
	1	Stainless Steel Coil Spring	19
	2	10-32 x 3/16 Allen Head set screw	21
	1	Stainless Steel Gear w/Short Drilled Shaft	23
866-021007	1	Stainless Steel Gear w/Short Drilled Shaft	23
874-060007		Ingress Plastic Roller Assembly	
	1	Ingress Plastic Roller with Pin	26
	1	Ingress Drive Shaft Assembly	27
866-040007		Agitator Drive Plastic Roller Assembly	
	1	Agitator Drive Plastic Roller w/Pin	33
	1	27 Tooth Plastic Gear w/Knurled Pin	36,35
	2	1/4 I.D. White Nylon Washers	34
	1	3/16 I.D. Plastic Gear, 12 Tooth	7
	1	3/16 I.D. Plastic Sprocket, 9 Tooth	5

Unless otherwise indicated, parts fit all current AFP 810 Models - Basic, Plus and Plus AR

DEVELOPER AND FIXER TRANSPORT MODULE

(See "Transport Assembly - Developer & Fixer - Chain Drive" Diagram)

<u>Part #</u>	<u>Quantity</u>	<u>Description</u>	<u>Drawing Item #</u>
866-030107		Right Side Panel Assembly, Transport Module	
	1	Right Side Panel	37
	3	With 3 Plastic Bushings 1/4" I.D. Already Pressed Into Side Panel	38
875-060007		Kit — Complete Set of Transport Module Assembly Gears	
	2	1/4" I.D. Plastic Sprockets, 9 Tooth	4
	11	3/16" I.D. Plastic Sprockets, 9 Tooth	5
	5	1/4" I.D. Plastic Gears, 12 Tooth	6
	21	3/16" I.D. Plastic Gears, 12 Tooth	7
	3	1/4" I.D. Stainless Steel Gear, 12 Tooth	25
	1	1/4" I.D. 27 Tooth Plastic Gear	36
	1	3/16" dia. Short Pin w/Double Knurl	35
874-091007		Kit — Plastic Rollers for Transport Module	
	1	Ingress Plastic Roller Assembly	26, 27
	8	Short Pin Plastic Rollers	29
	10	Long Pin Plastic Rollers	31
	1	Long Pin Short Knurled Plastic Roller	30
874-090007		Kit — Rubber Rollers For Transport Module	
	3	Rubber Roller Assembly #1 with Clip	28, 14
	1	Rubber Roller Assembly #2 with Clip	32, 14
	1	Rubber Roller Assembly #3	24
	2	1/4" I.D. Stainless Steel Gears, 12 Tooth	25
866-010007	1	Transport Drive Chain	3
866-030007	1	Left Side Panel, Transport Module	11

Unless otherwise indicated, parts fit all current AFP 810 Models - Basic, Plus and Plus AR

WASHER/DRYER MODULE

(See "Washer/Dryer Assembly - Chain Drive" Diagram)

<u>Part #</u>	<u>Quantity</u>	<u>Description</u>	<u>Drawing Item #</u>
867-001007	1	Complete Washer/Dryer Module	
874-081007		Plastic Spreader Assembly	
	1	Plastic Spreader	30
	2	1/4-20 x 5/8 Panhead Screws	8
874-070007		Hanger Assembly	
	1	Plastic Spreader	30
	2	Plastic Hangers	10
	2	1/4-20 x 1 1/2 Allen Head Screws	9
867-070007		Chain Guide Angle Plate Assembly	
	1	Chain Guide Angle Plate	13
	2	89-32 x 1/4" Phillips Panhead Screws	12
873-030107		Left Side Panel Assembly, Washer Dryer Module	
	1	Left Side Panel	15
	1	3/16" I.D. Plastic Bushing (w/shoulder)	17
	2	1/4" I.D. Plastic Bushing (w/o shoulder)	16
	1	1/4" I.D. Plastic Bushing (w/shoulder)	14
867-080007		Idler Assembly	
	1	Sprocket Assembly, 9 Tooth	11
	1	w/Screw & Nut Torsion Spring with Tab	18
	1	10-32 Plastic Washer-Face Nut	19
	1	#6 x 1/4" Phillips Sheet Metal Screw	20
867-050007		Drive Shaft Assembly	
	1	Drive Shaft Assembly w/Stainless Steel Gear	23
874-080007		Steel Spreader Assembly	
	1	Stainless Steel Spreader	32
	2	8-32 x 1/2" Phillips Panhead Screw	21

Unless otherwise indicated, parts fit all current AFP 810 Models - Basic, Plus and Plus AR

WASHER/DRYER MODULE

(See "Washer/Dryer Assembly - Chain Drive" Diagram)

<u>Part #</u>	<u>Quantity</u>	<u>Description</u>	<u>Drawing Item #</u>
867-060007		Water Manifold Assembly	
	1	Water Manifold w/8 Distribution Tubes	35
	1	#6 x 1" Phillips Flathead Screw	36
	1	#6-32 x 3/8 Phillips Panhead Screw	37
	1	Hose Assembly w/quick disconnect	38
881-050007	1	W/D Bushing Without Shoulder 1/4"	16
881-031007	1	W/D Bushing With Shoulder 1/4"	14
881-021007	1	W/D Bushing 3/16"	17
874-092007		Kit — Rubber Rollers for Washer/Dryer Module	
	3	Rubber Rollers Assy. #1 with clip	24,22
	8	Rubber Rollers Assy. #2 with clip	25,22
874-093007		Kit — Plastic Rollers for Washer/Dryer Module	
	18	Long Pin Plastic Rollers	26
	24	Short Pin Plastic Rollers	29
	1	Long Pin Plastic Roller to Activate Replenisher Micro Switch Assembly (Plastic roller will include stainless steel pin to activate replenisher micro switch to accommodate older models with add-on replenishment systems.)	27,28
875-070007		Kit — Washer/Dryer Assembly Module Gears	
	43	3/16 I.D. Plastic Gears	6
	20	3/16 I.D. Plastic Sprockets	3
	3	1/4" I.D. Stainless Steel Gears	4
	9	1/4" I.D. Plastic Gears	7
	8	1/4" I.D. Plastic Sprocket	2
867-010007	1	Washer/Dryer Module Drive Chain	1
873-030007	1	Right Side Panel (Does not use Bushings, Washer/Dryer)	33
867-040007	1	Top Baffle	41
867-020007	1	Front/Rear Baffle	40
873-060007	1	Quick Disconnect Retro Kit Hose Assembly	38

Unless otherwise indicated, parts fit all current AFP 810 Models - Basic, Plus and Plus AR

INDIVIDUAL PARTS FOR BOTH TRANSPORTS AND WASH/DRYER MODULES (See
Appropriate Diagram as Noted)

<u>Part #</u>	<u>Quantity</u>	<u>Description</u>	<u>Drawing Item #</u>	
			<u>W/D</u>	<u>TM*</u>
875-000007	1	Plastic Gear 3/16" I.D. 12 Tooth	6	7
875-050007	1	Plastic Sprocket 1/4" I.D. 9 Tooth	2	4
875-040007	1	Plastic Sprocket 3/16" I.D. 9 Tooth	3	5
875-010007	1	Plastic Gear 1/4" I.D. 12 Tooth	7	6
875-030007	1	Stainless Steel Gear 1/4" 12 Tooth	4	25
875-033007	1	Stainless Steel Retaining Clips 1/4" I.D. (package of 5)	22	14
874-000007	1	#1 Rubber Roller Assembly w/clip	24,22	28, 14
874-010007	1	#2 Rubber Roller Assembly w/clip	25,22	32, 14
874-020007	1	#3 Rubber Roller Assembly		24
874-030007	1	Short Pin Plastic Roller	29	29
874-040007	1	Long Pin Plastic Roller	26	31
875-020007	1	27-Tooth Plastic Gear with Stainless Steel Knurled Pin	35,36	
866-021007	1	Stainless Steel Gear w/Short Drilled Shaft	23	
874-050007	1	Paddle Drive Roller	33	
874-026393	1	Short Double Knurl Pin (Pkg 10)		
874-026883	1	Long Double Knurl Pin (Pkg 10)		
874-026754	1	Short Middle Knurl PIN (Pkg 10)		

*TM - Transport Module

*W/D - Washer/Dryer Module

Processor Maintenance Items

<u>Part #</u>	<u>Quantity</u>	<u>Description</u>
801-049191	1	Assy Funnel and Hose
800-089211	1	Developer Brush
800-089221	1	Fixer Brush
883-055-55	1	1/4 ounce Oiler with Needle Nose
884-000007	1	Washing Tub For Processor Modules

Unless otherwise indicated, parts fit all current AFP 810 Models - Basic, Plus and Plus AR

ELECTRONIC CONTROL BOXES

(See "Main Case" Diagrams)

<u>Part #</u>	<u>Description</u>
863-012107	810 Basic Control Box (110v)
863-012507	810 Plus Control Box (110v)
863-013107	810 Basic Control Box (220v)
86-012607	810 Plus Control Box (220v)

PARTS FOR ELECTRONIC CONTROL BOXES

863-016100	810 Basic Control Panel Membrane
863-016220	810 Plus Control Panel Membrane
863-016101	On/Off Main Switch 810 Basic
0000032087	¼ Amp Fuse 5x20 mm
863-080007	6 Amp Fuse (Main Fuse for 115 Volt Units)
809-090031	4 Amp Fuse (Main Fuse for 220 Volt Units)
809-090029	Main Fuse Holder (For Black Boxes)
0000032089	1 Amp Fuse 5x20mm Time Delayed

TEMPERATURE AND FILM SENSOR ASSEMBLIES

(See "Main Case" Diagrams)

803-000013	Film Sensing Assembly 810 Plus
876-060107-K	Developer Temperature Sensor
876-060107	Developer Temperature Sensor/Drain Plug Kit consisting of:
1	Molded Temperature Sensor
2	"Non-Stick" One Piece Drain Plug

Unless otherwise indicated, parts fit all current AFP 810 Models - Basic, Plus and Plus AR

DRYER HEATER FAN
(See "Heater Fan Assembly" Diagram)

<u>Part #</u>	<u>Quantity</u>	<u>Description</u>	<u>Drawing Item #</u>
868-002007		Heater Fan Assembly Complete (110v)	
868-002107		Heater Fan Assembly Complete (220v)	
868-012007		Heating Element Assembly (110v)	
868-013007		Heating Element Assembly (220v)	
		Heating Element Assemblies consist of the heating element soldered and shrinkwrapped to a supply cord including a molex plug, thermo switch assembly, heat shield and hardware	
868-020007		Dryer Fan 115Volt	23
868-021007		Dryer Fan 220Volt	23
868-030007		Thermo Switch Assembly	6
	1	2 Thermo Switches Soldered In Series	
877-030007	1	3-Pin Molex Connector with 3 Crimp Type Male Pins	27
800-051041	1	Finger Guard	24
000-00706-AM-H	5	6-32 X 3/8 P.P.H. S.S. screw	2
801-030131	1	4-40 X 13/16 P.P.H. S.S. screw	3
801-030541	2	6-32 X 3/4 P.P.H. S.S. screw	18
000-05000-AA-H	5	6-32 Hex Nut S.S.	19
801-030421	4	6-32 X 7/8 P.P.H. S.S. screw	20
801-030541	2	6-32 X 3/4 P.P.H. S.S. screw	25

Unless otherwise indicated, parts fit all current AFP 810 Models - Basic, Plus and Plus AR

HOSE SOLENOID

(See "Wash Solenoid Assembly" Diagram)

<u>Part #</u>	<u>Quantity</u>	<u>Description</u>	<u>Drawing Item #</u>
869-002007		Assembly Solenoid/Hose 115V with 3-Pin *Molex Plug	
	1	Reinforced Hose and Mesh Cover	
	1	Quick Disconnect	
	1	Solenoid	1 - 4
	1	Barbed Hose Adaptor	8
	2	Hose Clamp	9
869-003007	1	Assy Solenoid/Hose 220 Volt with AC Line Cord and 3 Pin *Molex Plug	
869-012007	1	Solenoid Valve Only 115 Volt with AC Line Cord and 3 Pin *Molex Plug	4
867-090107		Brass Swivel Assembly	
	1	Cone Shaped Screen Filter Washer	1
	1	Brass Pipe Swivel	2
	1	3/4" Brass Hose Coupling	3
877-030007	1	3-Pin *Molex Connector with 3 Crimp Style Male Pins	
876-060007		Assembly - Quick Disconnect Kit	

CHEMICAL REPLENISHMENT SYSTEMS (810 PLUS AR)

(See "Main Case" Diagrams)

<u>Part #</u>	<u>Quantity</u>	<u>Description</u>
892-000007		Internal Dev/Fix Replenisher Pump Assembly consisting of:
	1	Stainless Steel Mounting Bracket
	1	Developer Pump - Oscillating Type
	1	Fixer Pump - Oscillating Type
892-003007		Kit — Pump/Hose Adapter consisting of
	4	Plastic Hose Adaptors for Developer/Fixer Pumps
	1	Set of Red and Blue hoses
892-001007		Internal Replenisher Tank - Developer
892-002007		Internal Replenisher Tank - Fixer
892-003007		Set Red and Blue Hoses
800-088222		Replenisher Clip without Plastic Standoff
800-088222-1		Replenisher Clip With Plastic Standoff

Unless otherwise indicated, parts fit all current AFP 810 Models - Basic, Plus and Plus AR

PROCESSOR SUMP BASE AND COVERS

(See "Main Case" Diagrams)

<u>Part #</u>	<u>Quantity</u>	<u>Description</u>	
864-005007	1	Main Case Assembly (includes base with drain assembly plus one set of matching top and front covers)	
864-005007	1	Sump Base	
864-004207	1	Front Top Cover	
864-003207	1	Rear Top Cover	
800-088542	1	Base Plugs (Not Shown)	
0000022115	2	Red Caps (Not Shown)	
864-040007	1	Kit — Drain Fitting and Hose Assembly (consists of draw fitting, gasket, nut, hose clamp and drain hose)	
800-070164	1	Plastic Drain Fitting	2
800-070182	1	Gasket	3
800-070491	1	Nut	4
800-070391	1	Hose Clamp	5
864-050007	1	Drain Hose	6
873-020007		Kit — Chemical Drain Hose (for chemical recovery - Not Shown)	
	2	Hoses - 1 Red, 1 Blue	
	2	Funnels	
	1	Instruction Page	

DAYLIGHT LOADER

(Not Illustrated)

<u>Part #</u>	<u>Quantity</u>	<u>Description</u>
9992405001	1	Daylight Loader
873-010107	1	Foam Gasket Light Seal
873-000307	1	Film Box 8 x 10 Brown
873-011012	1	Hand Hole Assembly
873-010007	1	Loader Sleeve
873-011007	1	Hand Hole Insert Pan Loader
893-090507	1	Film Bag For Panoramic Loader
873-014007	1	Opaque Loader Cover - extraoral film
873-070007	1	Safelight Loader Cover - intraoral film only
800-071155	1	Safelight Loader Cover (Red) for use with Ektar Speed Film - must be used in conjunction with P/N 873-070007
800-071362	1	Bottom Cover

Unless otherwise indicated, parts fit all current AFP 810 Models - Basic, Plus and Plus AR

LEVELING BASE

(Not Illustrated)

<u>Part #</u>	<u>Quantity</u>	<u>Description</u>
800-070661-1	1	Low-Profile Leveling Base
0000044755	4	Leveling Pad
000-05400-AF-H	8	Hex Nut W/Washer, 1/4
00009500-AB-H	4	Flat Washer, SAE, 1/4
0000020689-2	4	Spacer
0000047833	4	Spring
0000061161	1	Instructions

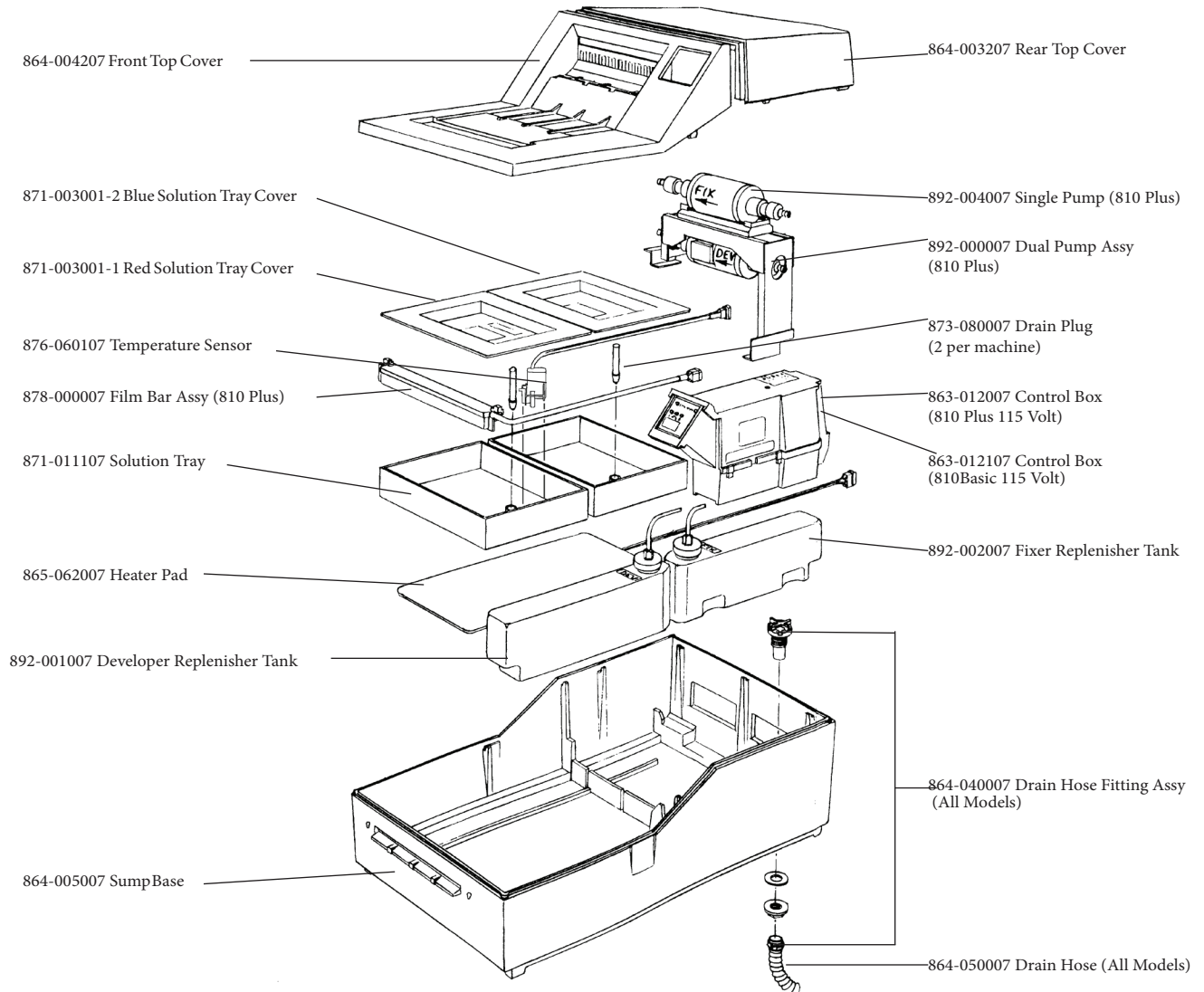
ACCESSORIES

(Not Illustrated)

<u>Part #</u>	<u>Quantity</u>	<u>Description</u>
9992405002	1	Processor Stand and Leveling Base
9992405003	1	Processor Leveling Base Only
9992405028	1	Processor Leveling Base - New Low-Profile
801-050253	1	Operator Manual
9992405006	1	Spare Parts Kit 810 Basic
800-089211	1	Scrub Brush – Developer
800-089221	1	Scrub Brush – Fixer
801-049181	1	Funnel & Hose Assembly
883-055-55	1	Oiler ¼ oz.

Unless otherwise indicated, parts fit all current AFP 810 Models - Basic, Plus and Plus AR

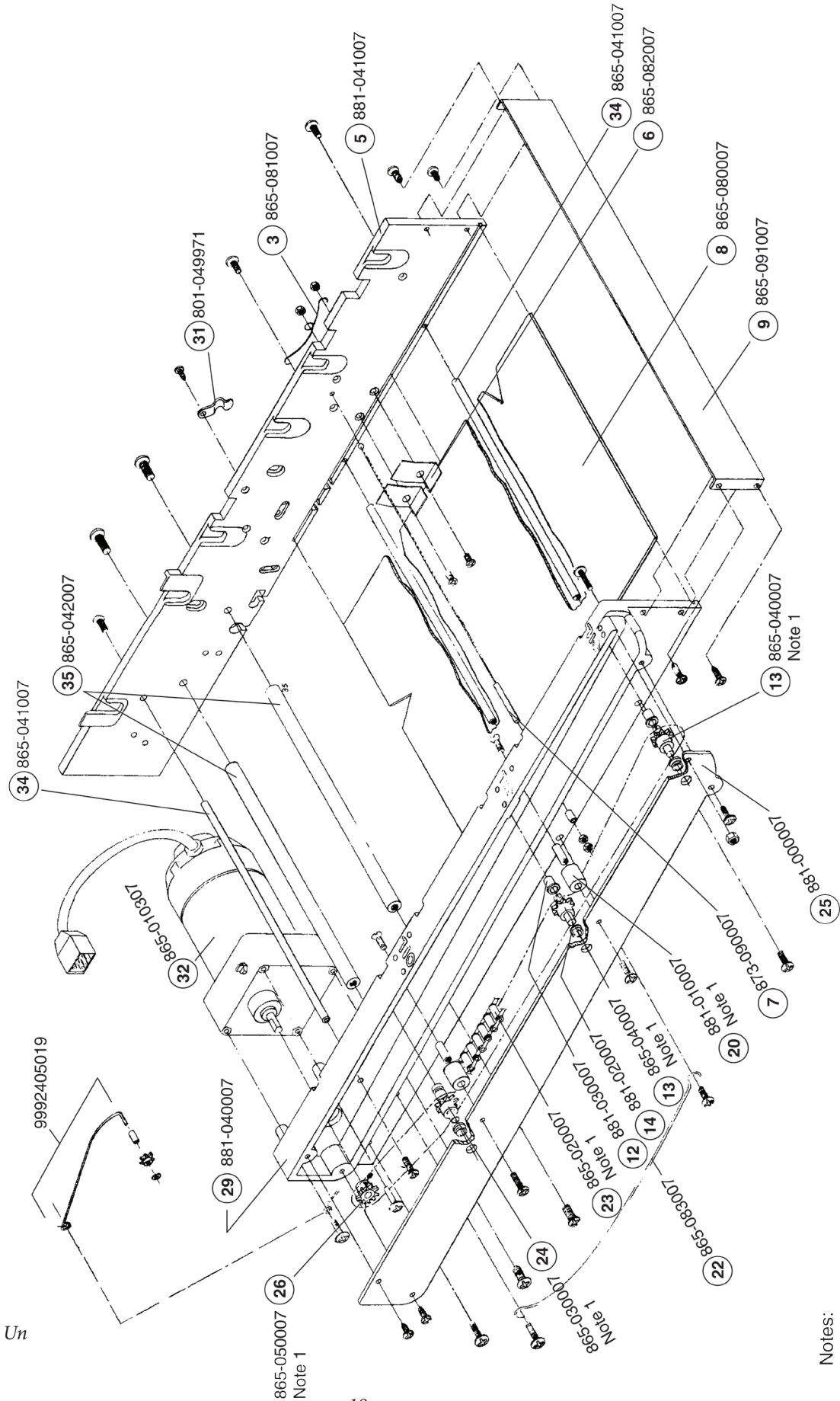
Main Case and major components (not illustrated elsewhere)



Unless otherwise indicated, parts fit all current AFP 810 Models - Basic, Plus and Plus AR

Main Frame Assembly (Chain Drive)

865-006007 (Includes Drive Motor)
865-004207 (Without Drive Motor)
865-004307 (Without Drive Motor
For International)

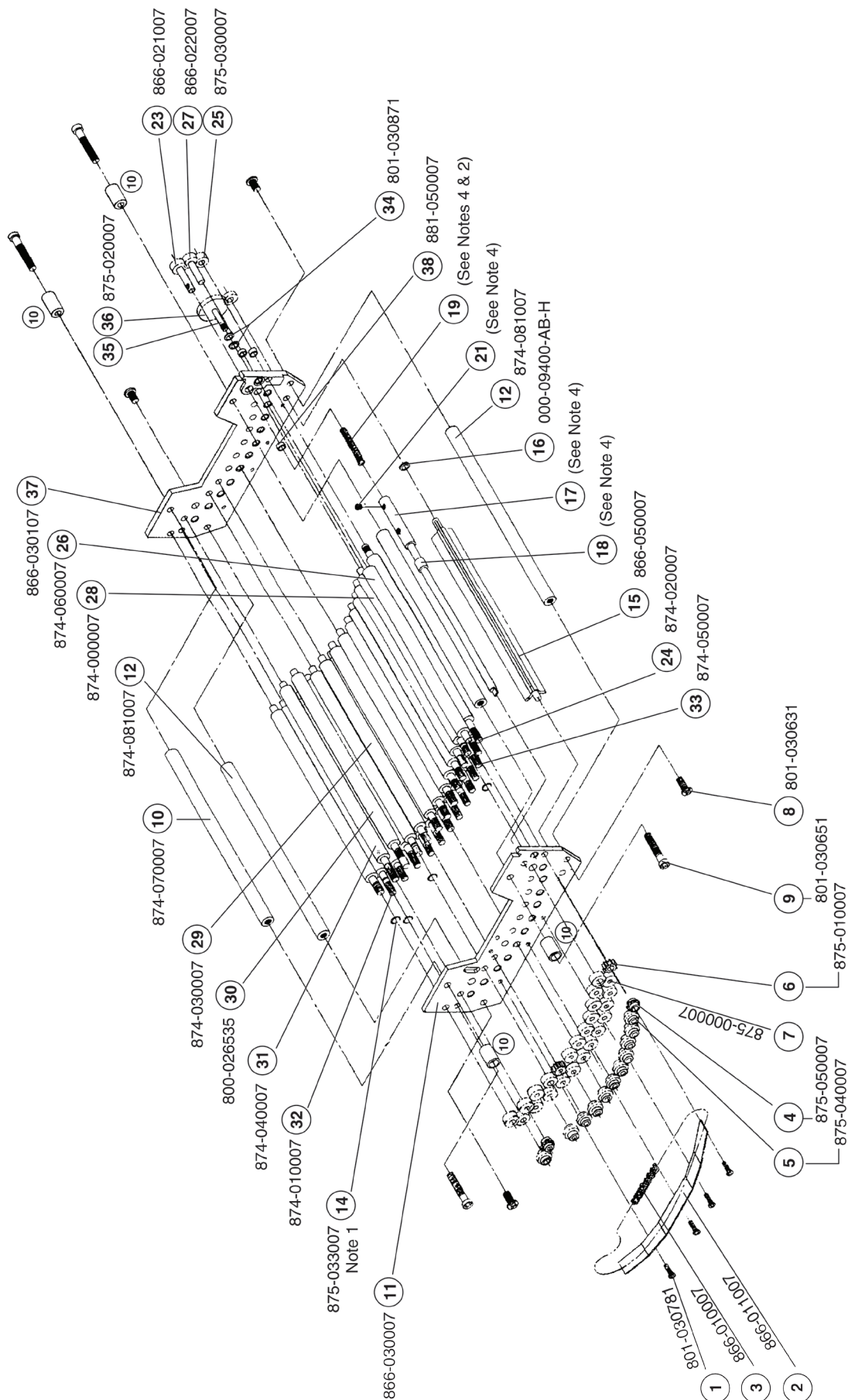


Notes:
 1. Included in Main Drive Chain Kit
 P/N 865-070007

Transport Assembly Developer & Fixer (Chain Drive) 866-001007

Notes:

1. Available as pack of 6
2. Available in Qty. of 24 under P/N 899-070033
3. Gear Kit 875-060007 consists of all gears
4. Drive shaft assembly 866-020007
5. Roller #28: 874-000007
Roller #29: 874-030007
Roller #30: 800-026535
Roller #31: 874-040007
Roller #32: 874-010007
Roller #33: 874-050007



Dryer Assembly (Main Drive) 867-001007

This diagram illustrates the exploded view of a dryer assembly, specifically the main drive mechanism. The components are numbered 1 through 41, indicating the sequence of assembly. The diagram shows the front and rear panels, the main drive motor, the drive shaft, the drum, and the various rollers and supports. Key components include:

- Front Panel (40):** The front of the dryer, labeled "FRONT".
- Rear Panel (40):** The back of the dryer, labeled "REAR".
- Top Panel (41):** The top of the dryer, labeled "TOP".
- Motor (10):** The main drive motor, labeled "800-026382".
- Drive Shaft (13):** The shaft connecting the motor to the drum, labeled "867-070007".
- Drum (21):** The main rotating drum, labeled "000-00808-AM-H".
- Rollers (18, 20):** The rollers supporting the drum, labeled "Note 6".
- Supports (24, 25, 26, 27, 28, 30, 32, 33, 35, 36, 37, 38):** Various structural components and fasteners.
- Fasteners (8, 9, 12, 13, 18, 20, 21, 22, 24, 25, 26, 27, 28, 30, 32, 33, 35, 36, 37, 38):** Screws, bolts, and nuts used for assembly.
- Old Style (no longer used):** A note indicating that the old style of the motor (10) is no longer used.
- Notes:** Several notes are present, including "Note 4" and "Note 1", providing additional information about the components.

The diagram is a technical drawing showing the exploded view of the dryer assembly. The components are numbered 1 through 41, indicating the sequence of assembly. The diagram shows the front and rear panels, the main drive motor, the drive shaft, the drum, and the various rollers and supports. Key components include:

- Front Panel (40):** The front of the dryer, labeled "FRONT".
- Rear Panel (40):** The back of the dryer, labeled "REAR".
- Top Panel (41):** The top of the dryer, labeled "TOP".
- Motor (10):** The main drive motor, labeled "800-026382".
- Drive Shaft (13):** The shaft connecting the motor to the drum, labeled "867-070007".
- Drum (21):** The main rotating drum, labeled "000-00808-AM-H".
- Rollers (18, 20):** The rollers supporting the drum, labeled "Note 6".
- Supports (24, 25, 26, 27, 28, 30, 32, 33, 35, 36, 37, 38):** Various structural components and fasteners.
- Fasteners (8, 9, 12, 13, 18, 20, 21, 22, 24, 25, 26, 27, 28, 30, 32, 33, 35, 36, 37, 38):** Screws, bolts, and nuts used for assembly.
- Old Style (no longer used):** A note indicating that the old style of the motor (10) is no longer used.
- Notes:** Several notes are present, including "Note 4" and "Note 1", providing additional information about the components.

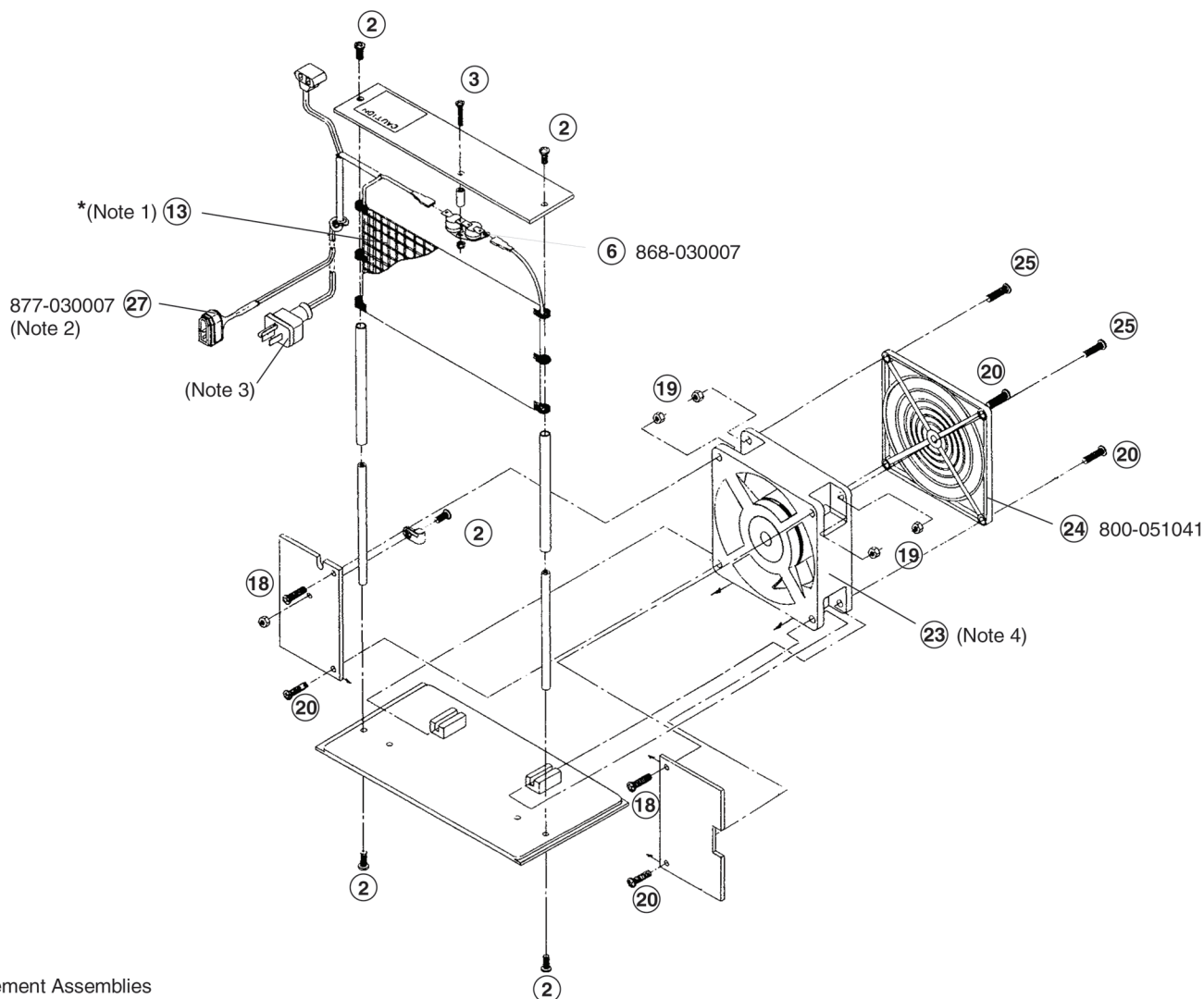
1. Available as pack of 6
2. Includes gear and "C" clip
3. Part of 873-030107
4. Part of 867-060007
5. Roller #24: 874-000007 (includes "C" clip)
Roller #25: 874-010007 (includes "C" clip)
Roller #26: 874-040007
Roller #27: 874-050007
Roller #29: 874-030007
Plastic Hanger #30: 874-070007
Idler Assembly Part. #867-080007

Heater Fan Assembly

868-002007 - 115VAC (810Basic/9000/Excel)

868-002107 - 220VAC (810Basic/9000/Excel)

868-001007 - 115VAC (W/standard 3-pin wall plug for older models)



NOTES:

* Heating Element Assemblies consist of the heating element soldered and shrinkwrapped to a supply cord including a molex or wall plug, thermo switch assembly, heat shield and hardware

- 1) **868-012007** - Heating Element Assembly for 810Basic/9000/Excel processors (115VAC)
868-010007 - Heating Element Assembly w/ standard wall plug for older model processors with blue or stainless steel control boxes (115VAC)
868-013007 - Heating Element Assembly for 810Basic/9000/Excel processors (220VAC)

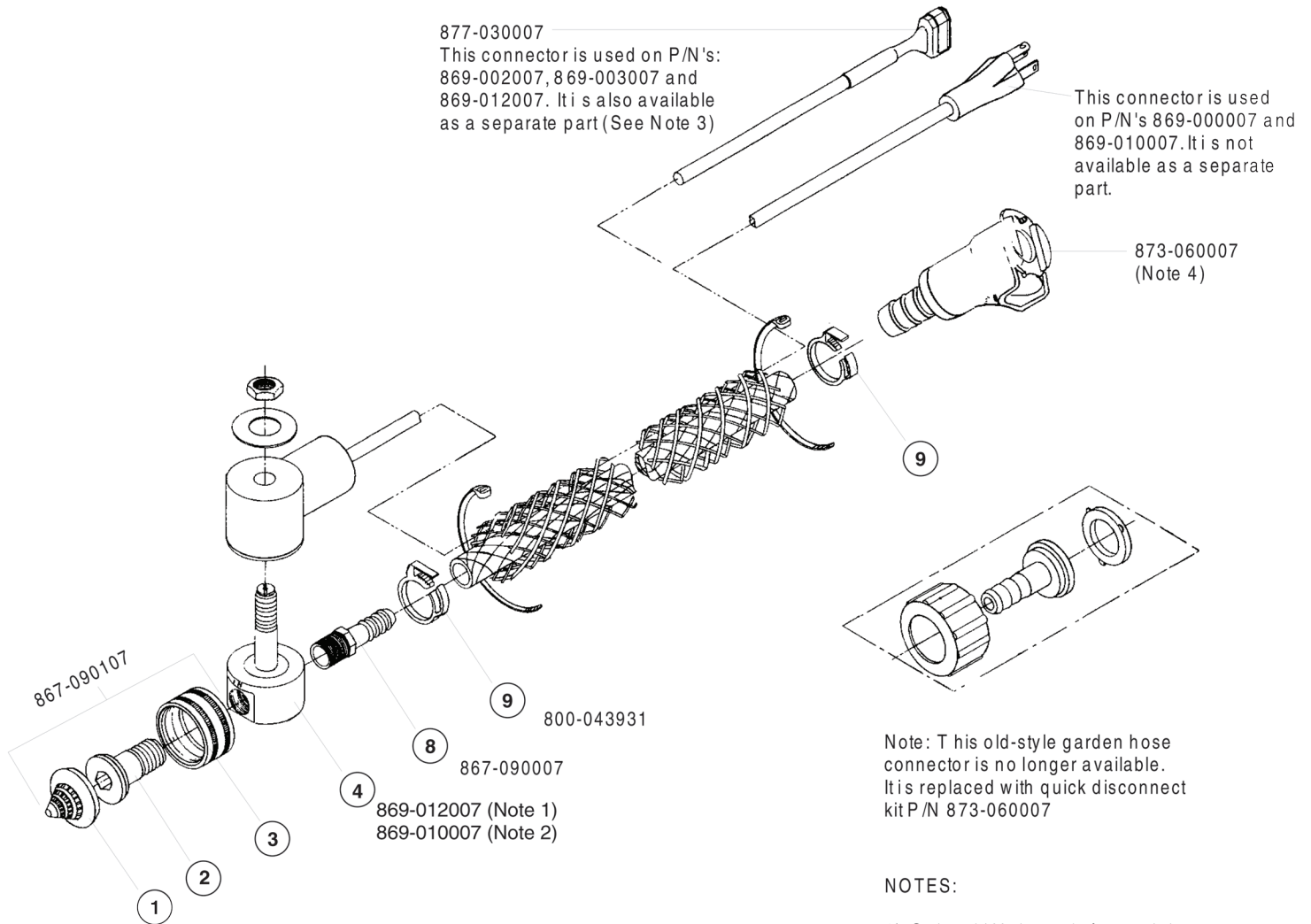
- 2) Molex plug with 3 male pins only.
- 3) Standard wall plug available through local hardware store.
- 4) 868-020007 - Dryer Fan (115VAC)
 868-021007 - Dryer Fan (220VAC)

Hardware:

2	0 00-00706-AM-H	6-32 X 3/8 P.P.H.S.S screw
3	8 01-030131	4-40 X 13/16 P.P.H.S.S.screw
18	8 01-030541	6-32 X 3/4 P.P.H.S.S.screw
19	0 00-05000-AA-H	6-32 Hex Nut S.S.
20	8 01-030421	6-32 X 7/8 P.P.H.S.S.screw
25	8 01-030541	6-32 X 3/4 P.P.H.S.S.screw

Wash Solenoid Assembly

869-002007 - 115VAC (810Basic/9000/Excel)
 869-003007 - 220VAC (810Basic/9000/Excel)
 869-000007 - 115VAC (W/standard 3-pin wall
 plug for older models)



Note: This old-style garden hose
 connector is no longer available.
 It is replaced with quick disconnect
 kit P/N 873-060007

NOTES:

- 1) Solenoid Valve only for model
810Basic, 9000 & Excel processors.
- 2) Solenoid Valve only for older model
processors requiring a 3-prong
wall plug.
- 3) 3-pin Molex connector P/N 877-030007
(includes three male pins).
- 4) Comes with male and female connector.